

STREET TREE PACKAGE

PROJECT: BRIDGEFIELD-STAGE 11
CLIENT: GOLDFIELDS
ISSUE: D - A/MENTS COUNCIL COMMENTS

DRAWING SCHEDULE:

DRAWING NO.	DRAWING TITLE	ISSUE
SST00	COVER PAGE	D
SST01	STREET TREE PLAN 01	D
SST02	STREET TREE PLAN 02	D
SST03	LANDSCAPE DETAILS 01	D
SST04	LANDSCAPE DETAILS 02	D



OVERALL PLAN
NOT TO SCALE

CITY OF MELTON
ENGINEERING PLANS
(LANDSCAPE)
APPROVED
07 Apr 2021
CITY DESIGN DATE

APPROVED:

DATE:

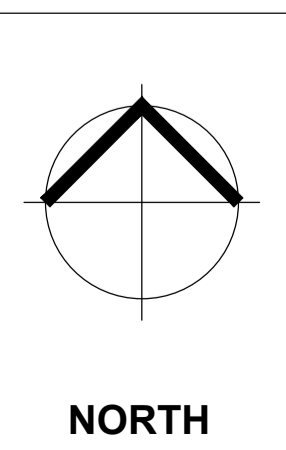
DRAWING NOTES:

ISSUE	DATE	DESCRIPTION	INITIALS
A	19.11.20	FOR ELEC COORDINATION	NL
B	15.01.21	FOR APPROVAL	NL
C	08.02.21	FOR APPROVAL	NL
D	15.03.21	A/MENTS COUNCIL COMMENTS	NL

PROJECT:
BRIDGEFIELD-STAGE 11
DRAWING NO.:
SST00
SCALE:
NTS

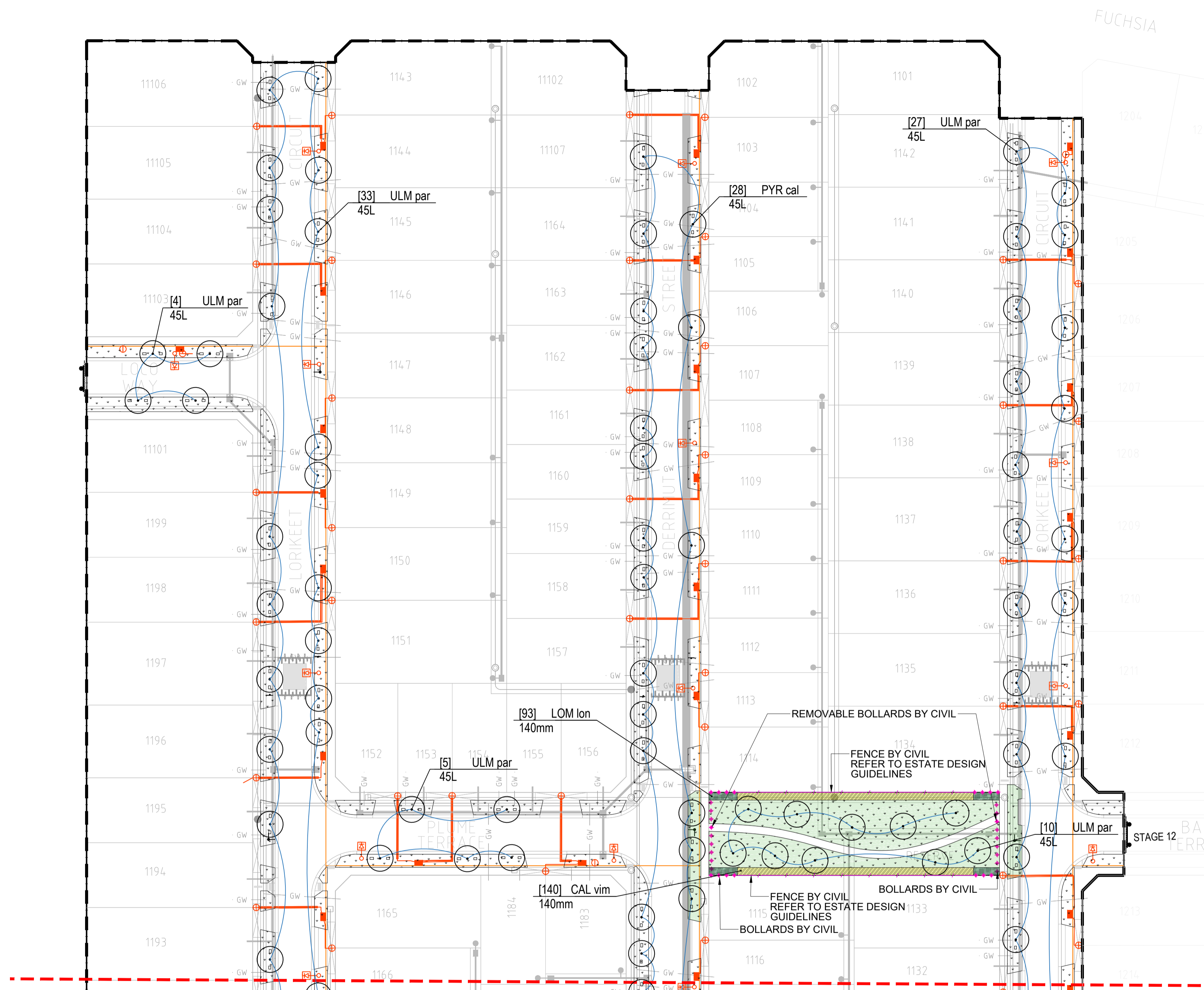
DRAWING TITLE:
COVER PAGE
ISSUE:
D
DRAWN BY:
NL
CHECKED BY:
MS

CLIENT:
GOLDFIELDS
BUILDING 5, 658 CHURCH ST
RICHMOND VIC 3121



FLOW DESIGN STUDIO
112 CHESTNUT STREET
CREMORNE VIC 3121
AUSTRALIA
P: (03) 9425 9395
www.flowdesignstudio.com.au





- LEGEND**
- HYDROSEED
QTY: 3728 M2
AS PER NATURE STRIP HYDROSEED MIX
- REFER TO BELOW NOTES
 - INSTANT TURF (KIKUYU)
QTY: 1276 M2
 - GARDEN BED 01
QTY: 137M2 (3 PER LM)
 - GARDEN BED 02
QTY: 31M2 (3 PER M2)
 - STAGE BOUNDARY
 - HV LINE
 - LV LINE
 - STREET LIGHT
 - BOLLARDS BY CIVIL
 - FENCE BY CIVIL
 - STREET SIGN
 - PASSIVE TREE IRRIGATION SYSTEM
TOTAL : 89

- NOTES:**
- NATURE STRIP GRASSING MIX SHALL BE:
KIKUYU 100%
 - TREES SHALL NOT BE PLANTED LESS THAN THE FOLLOWING DISTANCES FROM EXISTING ELEMENTS UNLESS OTHERWISE STATED IN THE DOCUMENTATION:

FOOTPATHS:	1.25M
DRIVEWAYS AND CROSSOVERS:	3.0M
STORMWATER AND SEWERAGE PITS:	2.0M
SERVICE CROSSINGS:	2.0M
INTERSECTIONS:	10.0M
KERB AND CHANNEL:	1.25M
STREET LIGHTS:	2.5M
FIRE PLUGS:	3.0M
ADJOINING PROPERTIES AND COUNCIL BUILDINGS:	5.0M (SMALL TREE ONLY)
 - TREE LOCATIONS ARE TO BE CONFIRMED ON SITE BY COUNCIL PRIOR TO EXCAVATION AND INSTALLATION

SCHEDULE

TREES	CODE	BOTANICAL NAME	COMMON NAME	SIZE	QTY
	COR mac	<i>Corymbia maculata</i>	Spotted Gum	45L	18
	PYR cal	<i>Pyrus calleryana</i> 'Chanticleer'	Callery Pear	45L	28
	ULM par	<i>Ulmus parvifolia</i> 'Todd'	Chinese Elm	45L	79
	CAL vim	<i>Slim™ Callistemon viminalis</i>	Bottlebrush	140mm	140
	LOM lon	<i>Lomandra longifolia</i> 'Tanika'	Mat Rush	140mm	93

MATCH PLAN SST02

CITY OF MELTON
ENGINEERING PLANS
(LANDSCAPE)
APPROVED
07 Apr 2021
CITY DESIGN DATE

APPROVED:

DATE:

DRAWING NOTES:

ISSUE	DATE	DESCRIPTION	INITIALS
A	19.11.20	FOR ELEC COORDINATION	NL
B	15.01.21	FOR APPROVAL	NL
C	08.02.21	FOR APPROVAL	NL
D	15.03.21	A/MENTS COUNCIL COMMENTS	NL

PROJECT:
BRIDGEFIELD-STAGE 11

DRAWING NO.:
SST01

SCALE:
1:500@A1

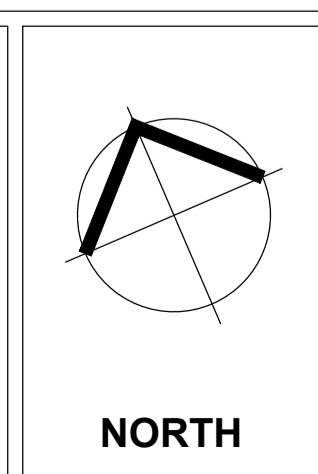
DRAWING TITLE:
STREET TREE PLAN 01

ISSUE:
D

DRAWN BY:
NL

CHECKED BY:
MS

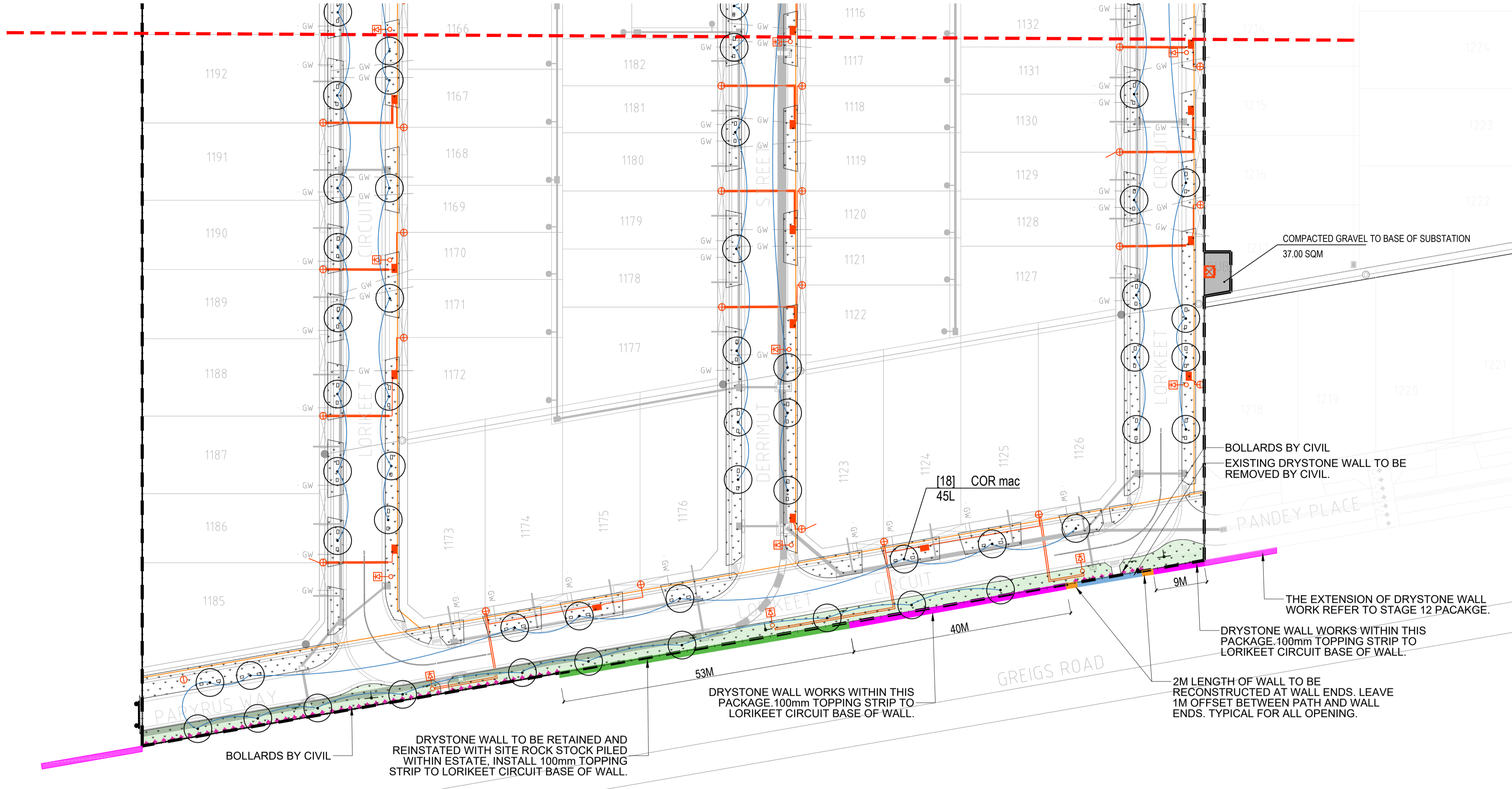
CLIENT:
GOLDFIELDS
BUILDING 5, 658 CHURCH ST
RICHMOND VIC 3121



FLOW DESIGN STUDIO
112 CHESTNUT STREET
CREMORNE VIC 3121
AUSTRALIA
P: (03) 9425 9395
www.flowdesignstudio.com.au



MATCH PLAN SST01



- LEGEND**
- HYDROSEED
QTY: 3728 M2
AS PER NATURE STRIP HYDROSEED MIX
- REFER TO BELOW NOTES
 - INSTANT TURF (KIKUYU)
QTY: 1276 M2
 - COMPACTED GRAVEL
APPROX. 37 SQ. M
 - STAGE BOUNDARY
 - HV LINE
 - LV LINE
 - STREET LIGHT
 - BOLLARDS BY CIVIL
 - FENCE BY CIVIL
 - DRYSTONE WALL TO BE RETAINED 49M
REFER DETAILS AND NOTES
 - DRYSTONE WALL TO BE REMOVED 12M
REFER NOTES
 - DRYSTONE WALL TO BE RETAINED & REINSTATED 53M
REFER NOTES
 - RECONSTRUCT 2M AT ALL WALL ENDS AND OPENINGS
REFER DETAILS AND NOTES
 - STREET SIGN
 - PASSIVE TREE IRRIGATION SYSTEM
TOTAL : 89

- NOTES:**
- NATURE STRIP GRASSING MIX SHALL BE:
KIKUYU 100%
 - TREES SHALL NOT BE PLANTED LESS THAN THE FOLLOWING DISTANCES FROM EXISTING ELEMENTS UNLESS OTHERWISE STATED IN THE DOCUMENTATION:

FOOTPATHS:	1.25M
DRIVEWAYS AND CROSSOVERS:	3.0M
STORMWATER AND SEWERAGE PITS:	2.0M
SERVICE CROSSINGS:	2.0M
INTERSECTIONS:	10.0M
KERB AND CHANNEL:	1.25M
STREET LIGHTS:	2.5M
FIRE PLUGS	3.0M
ADJOINING PROPERTIES AND COUNCIL BUILDINGS	5.0M (SMALL TREE ONLY)
 - LV CONNECTIONS (orange colour) 3.0M
HV CONNECTIONS (blue colour) 5.0M
CONDUITS (orange colour)
 - TREE LOCATIONS ARE TO BE CONFIRMED ON SITE BY COUNCIL PRIOR TO EXCAVATION AND INSTALLATION

SCHEDULE

TREES	CODE	BOTANICAL NAME	COMMON NAME	SIZE	QTY
	COR mac	<i>Corymbia maculata</i>	Spotted Gum	45L	18
	PYR cal	<i>Pyrus calleryana</i> 'Chanticleer'	Callery Pear	45L	28
	ULM par	<i>Ulmus parvifolia</i> 'Todd'	Chinese Elm	45L	79

CITY OF MELTON
ENGINEERING PLANS
(LANDSCAPE)
APPROVED
07 Apr 2021
CITY DESIGN DATE

APPROVED:

DATE:

DRAWING NOTES:

ISSUE	DATE	DESCRIPTION	INITIALS
A	19.11.20	FOR ELEC COORDINATION	NL
B	15.01.21	FOR APPROVAL	NL
C	08.02.21	FOR APPROVAL	NL
D	15.03.21	AMENTS COUNCIL COMMENTS	NL

PROJECT:
BRIDGEFIELD-STAGE 11

DRAWING NO.:
SST02

SCALE:
1:500@A1

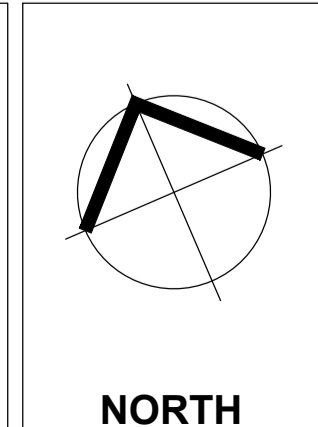
DRAWING TITLE:
STREET TREE PLAN 02

ISSUE:
D

DRAWN BY:
NL

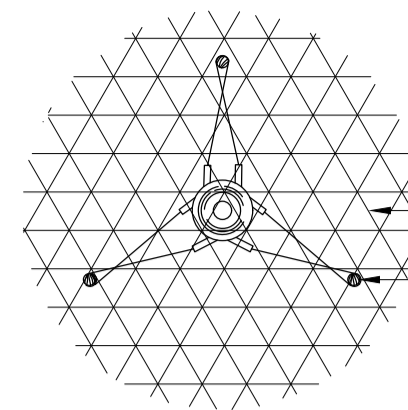
CHECKED BY:
MS

CLIENT:
GOLDFIELDS
BUILDING 5, 658 CHURCH ST
RICHMOND VIC 3121



FLOW DESIGN STUDIO
112 CHESTNUT STREET
CREMORNE VIC 3121
AUSTRALIA
P: (03) 9425 9395
www.flowdesignstudio.com.au



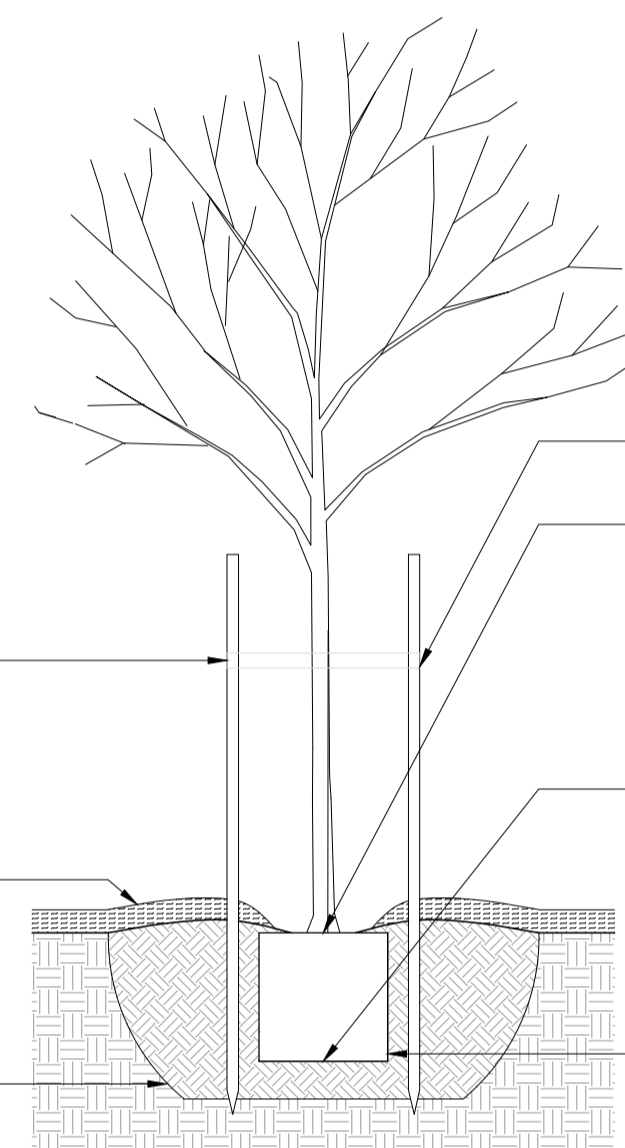


MULCH PROTECTION RING TO EACH ENTRY SPECIMEN
 TREE TO BE SECURED TO EACH STAKE WITH 3X NO. 50MM WIDE HESSIAN OR NYLON TIES WRAPPED AROUND THE TRUNK AND SECURED BACK TO STAKE WITH STAPLES OR NAILS ALLOWING SOME TRUNK MOVEMENT

TO PROMOTE LATERAL ROOT GROWTH THE PLANTING HOLE SHOULD BE NO LESS THAN 2 TIMES THE DIAMETER OF THE ROOT BALL

NOTES:

- TREES SHALL BE SELF SUPPORTING
- TREES SHALL BE OF GOOD HEALTH AND VIGOR
- ENSURE ALL LABELS WIRES, TWINE AND OTHER BINDING MATERIALS ARE REMOVED FROM PLANTING MATERIAL, INCLUDING ROOT BALLS PRIOR TO BACKFILLING
- WATER IMMEDIATELY FOLLOWING PLANTING, SAUCER TO BE FILLED TWICE
- SITE TO BE LEFT CLEAN AND TIDY ON COMPLETION OF PLANTING. REMOVE WEEDS AND BUILDING SPOIL FROM TREE PLANTING ZONE
- FOR TREES BETWEEN:
 - 1.5M-2.5M HIGH - SUPPLY STAKES AT 1.8M HEIGHT,
 - 2.5M-3.0M HIGH - SUPPLY STAKES AT 2.1M HEIGHT,
 - ABOVE 3.5M HIGH - SUPPLY STAKES AT 2.4M HEIGHT
- ANY VARIATIONS TO THIS DETAIL TO BE SUBMITTED FOR APPROVAL PRIOR TO ANY PLANTING
- MULCH SURROUND TO TREES IN GRASS AREA TO FINISH WITH NEAT SPADE CUT EDGE



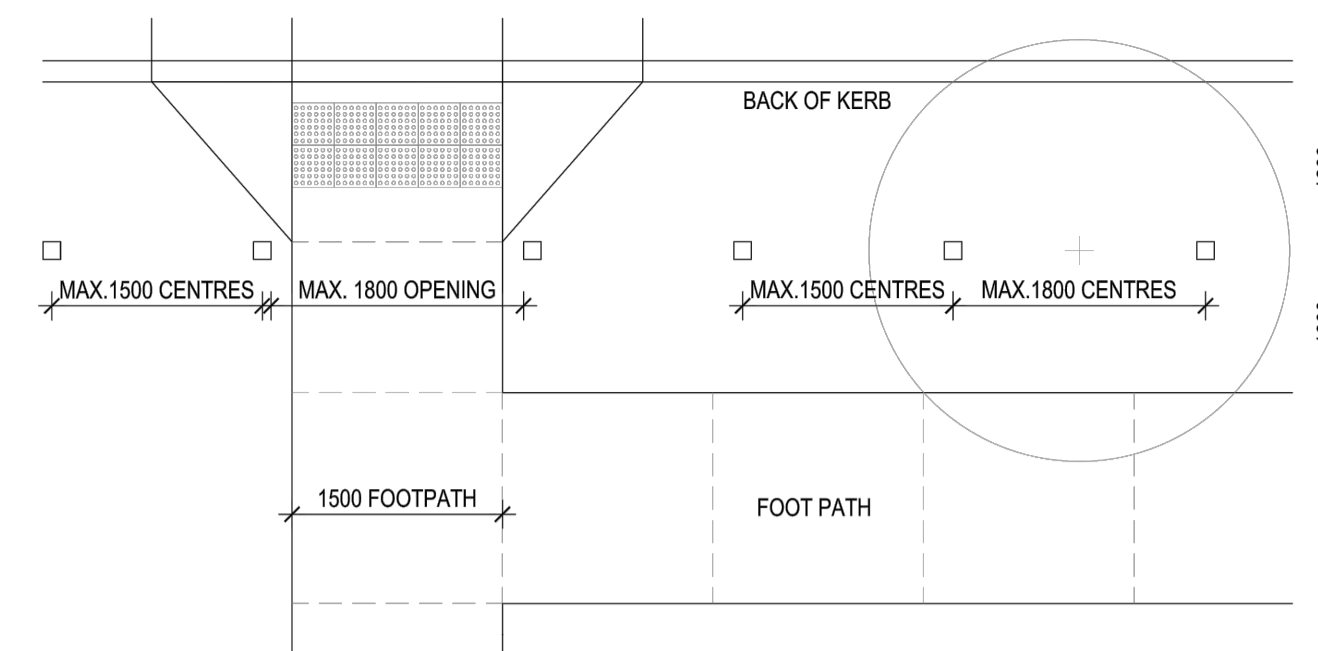
TREE STAKES TO BE SET VERTICALLY AND CLEAR OF ROOT BALL
 TOP OF ROOTBALL IS FLUSH WITH FINISHED LEVEL OF SITE SOIL. FORM A WATERING BASIN AROUND THE BASE OF THE PLANT ENSURING NO BUILD UP OF SOIL OR MULCH AROUND THE BASE OF THE TRUNK
 PLACE PLANT IN CENTRE OF HOLE AT GROUND LEVEL WITH ROOT BALL RESTING ON THE BASE OF THE HOLE BACKFILL HOLE WITH APPROVED SITE SOIL. ROOTBALL TO BE PROPERLY PREPARED PRIOR TO PLANTING. ENSURE NO ROOTS ARE PROTRUDING ABOVE THE FINISHED SURFACE
 EXCAVATE PLANTING HOLE WITH SLOPING SIDES 2xTIMES THE DIAMETER OF THE ROOT BALL. DEPTH OF PLANTING HOLE TO BE ONLY SLIGHTLY BELOW THE DEPTH OF THE ROOT BALL. BREAK UP SIDES AND BASE OF EXCAVATION TO 100MM. TOP OF ROOT BALL IS FLUSH WITH FINISHED LEVEL OF PLANTING HOLE

50MM WIDE NYLON OR HESSIAN TIES FIXED AT STAKE, PLACED 300MM SPACING, NO GREATER THAN 1/2 TREE HEIGHT. TIES ARE TO BE LOOSE FIT AND ALLOW FOR SAFE MOVEMENT OF TREE CANOPY

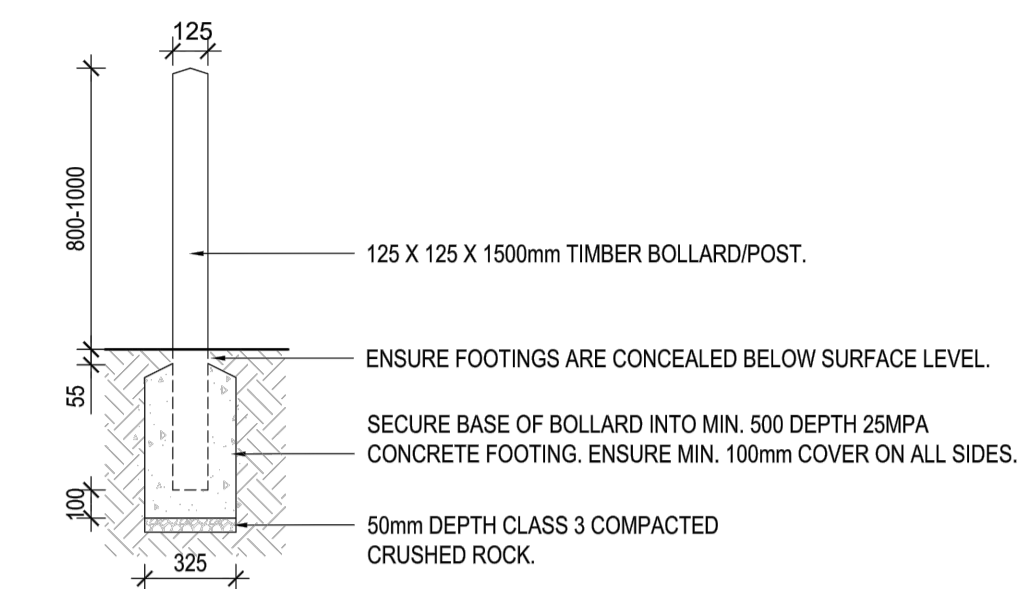
MULCH AS SPECIFIED TO A MIN. DEPTH OF 150MM FROM EDGE OF THE ROOT BALL TO THE EDGE OF THE PLANTING PIT. KEEP MULCH AWAY FROM STEM AND DO NOT COVER ROOTBALL

BREAK UP SIDES AND BASE OF EXCAVATION TO 100MM

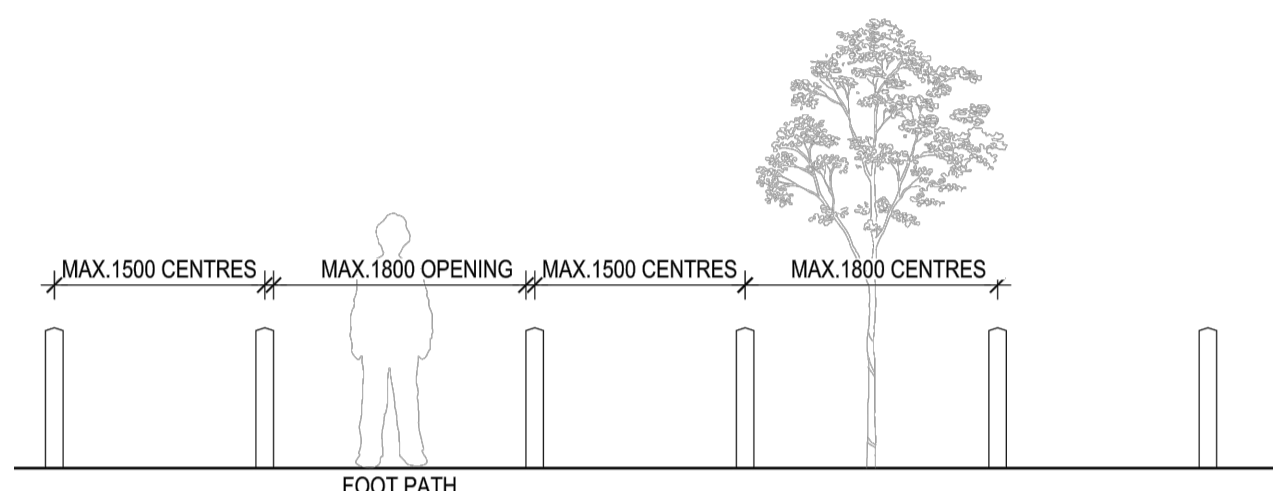
A TREE PLANTING DETAIL
003 1:50@A1



1 TYPICAL TIMBER BOLLARDS LAYOUT
PLAN 1:50

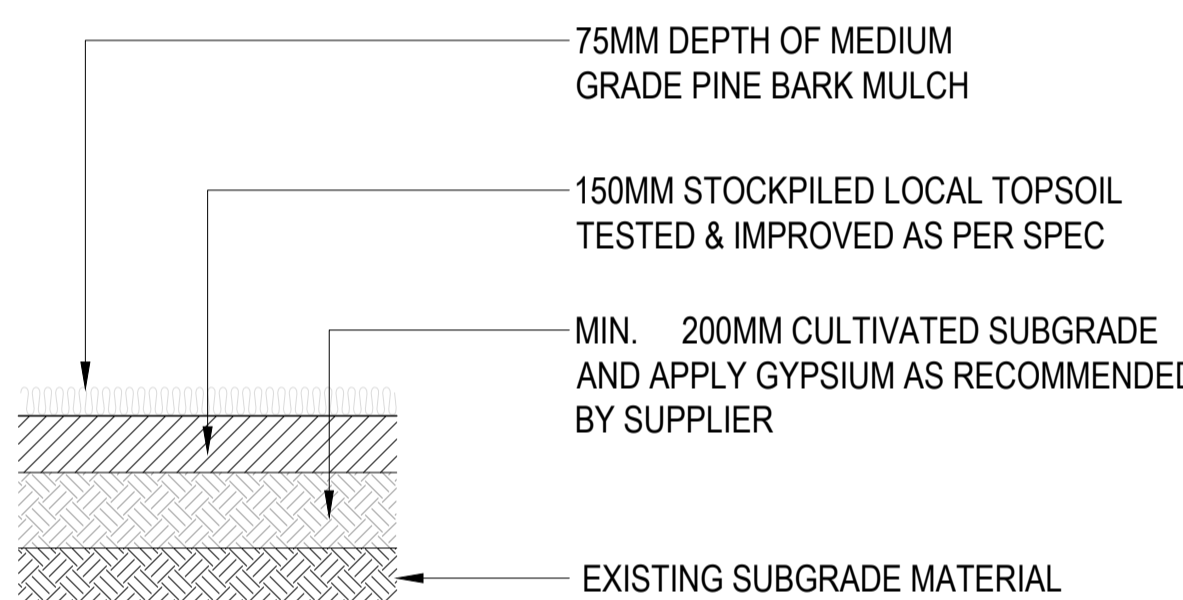


3 TYPICAL TIMBER BOLLARD
CROSS SECTION 1:25



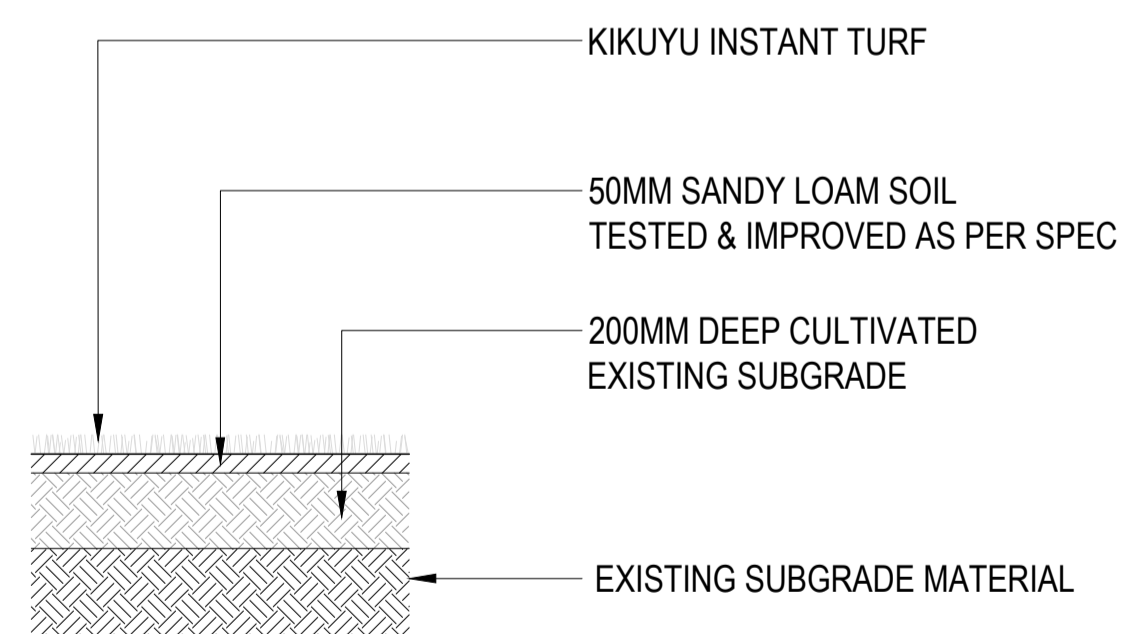
2 TYPICAL TIMBER BOLLARDS LAYOUT
ELEVATION 1:50

- NOTES:**
- WHERE POSSIBLE, BOLLARDS ARE TO BE AVOIDED IN SHARED PATHS. REFER TO AUSTRROADS - TERMINAL TREATMENTS FOR EXCLUDING VEHICLES FOR FURTHER INFORMATION.
 - BOLLARD/POST FRANGIBILITY IS REQUIRED WHERE A BOLLARD/POST EXCEEDS 125mm IN WIDTH, IS ADJACENT A ROAD OR AS SPECIFIED BY THE RELEVANT AUTHORITY.
 - SPACING OF BOLLARDS SHOULD BE NO GREATER THAN 1.5M CENTRES.
 - RECYCLED PLASTIC BOLLARDS ARE PREFERRED FOR ENVIRONMENTAL BENEFITS. TIMBER BOLLARDS SHOULD ONLY BE USED AS APPROVED BY COUNCIL.
 - SUITABLE TIMBER:
 - AFC/FSC AUSTRALIAN HARDWOOD TIMBER
 - RECLAIMED AUSTRALIAN HARDWOOD TIMBER.
 - TIMBER POSTS TO BE DRESSED. TIMBER MUST BE FREE FROM SPLITS AND OBVIOUS SPLINTERS.
 - EXTEND POST TO MIN. DEPTH OF 300mm INTO CONCRETE FOOTING, DEPENDING ON PRODUCT AND FIXING TYPE. ENSURE FOOTINGS ARE CONCEALED BELOW SURFACE LEVEL.
 - LAYOUT ON SLOPES SUBJECT TO COUNCIL APPROVAL.



B TYPICAL GARDEN BED DETAIL
003 1:20@A1

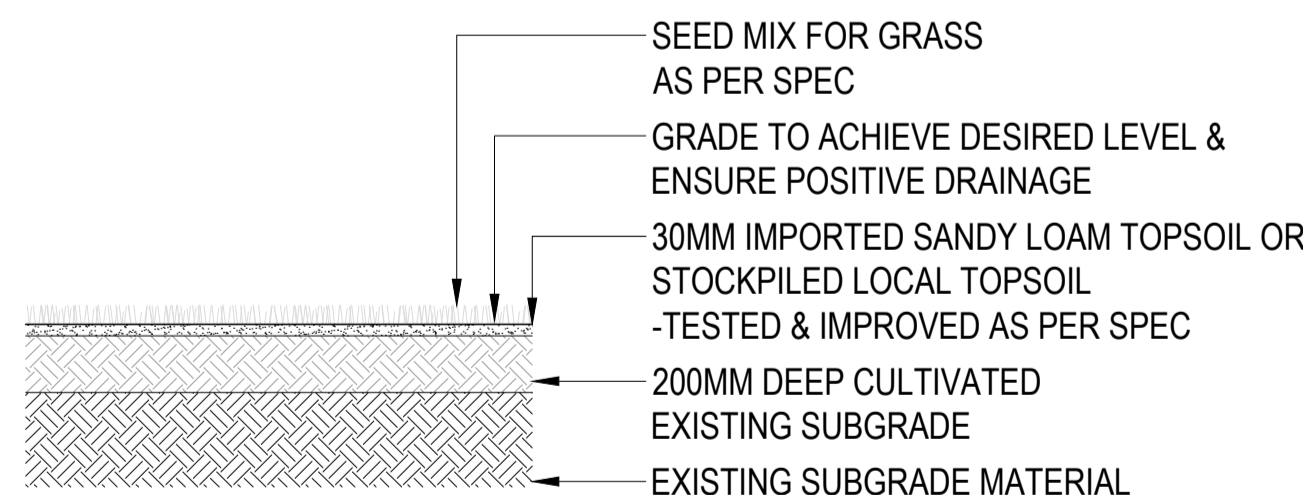
CITY OF MELTON
 ENGINEERING PLANS
 (LANDSCAPE)
APPROVED
 07 Apr 2021
 CITY DESIGN DATE



C INSTANT TURF DETAIL
003 1:20@A1

NOTES:

- THERE IS TO BE NO ROCK OR WEEDS IN TOPSOIL



D GRASS SEEDING DETAIL
003 1:20@A1



E TYPICAL FORM OF LOCAL DRYSTONE WALLS
003 NTS

DRYSTONE WALL NOTES:

- Length of wall to be conserved/reconstructed comply with length stipulated in drystone wall management plan and these plans and should be repaired and reconstructed to the same height, width and style as the original wall.
- Typical dimensions of wall to be, 1.0m Wide at base and 0.75 to 1.0m High.
- Before wall construction commences a 5m sample of wall is to be prepared for inspection and approval by Heritage planner.
- Suitably qualified and accredited drystone waller to prepare: Drystone wall and approved by Council prior to engagement.
- Concrete, mortar and mud must not be used in dry stone walls.
- All rock to be source from on site stockpiles typically within future school site, any additional rock required to be sourced from Rockbank.

DRYSTONE WALL OFFSETS GUIDE:

- Footpaths should be a minimum of 0.5m from dry stone walls.
- Areas between footpaths and drystone walls should be laid with free draining gravel or stone
- Planting within 1m of dry stone walls should be low grasses or groundcovers less than 200mm high, not garden beds.
- No mulch or tan bark should be used at the base of dry stone walls.
- Trees should not be planted closer than 1m and should have a mature canopy height of at least 2m. "

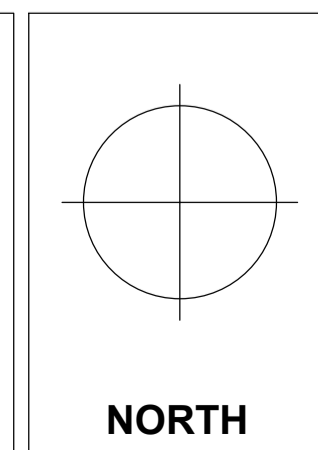
APPROVED:

DATE:

DRAWING NOTES:			
ISSUE	DATE	DESCRIPTION	INITIALS
A	19.11.20	FOR ELEC COORDINATION	NL
B	15.01.21	FOR APPROVAL	NL
C	08.02.21	FOR APPROVAL	NL
D	15.03.21	A/MENTS COUNCIL COMMENTS	NL

PROJECT: BRIDGEFIELD-STAGE 11	DRAWING TITLE: LANDSCAPE DETAILS 01
DRAWING NO.: SST03	ISSUE: D
SCALE: AS SHOWN	DRAWN BY: NL
	CHECKED BY: MS

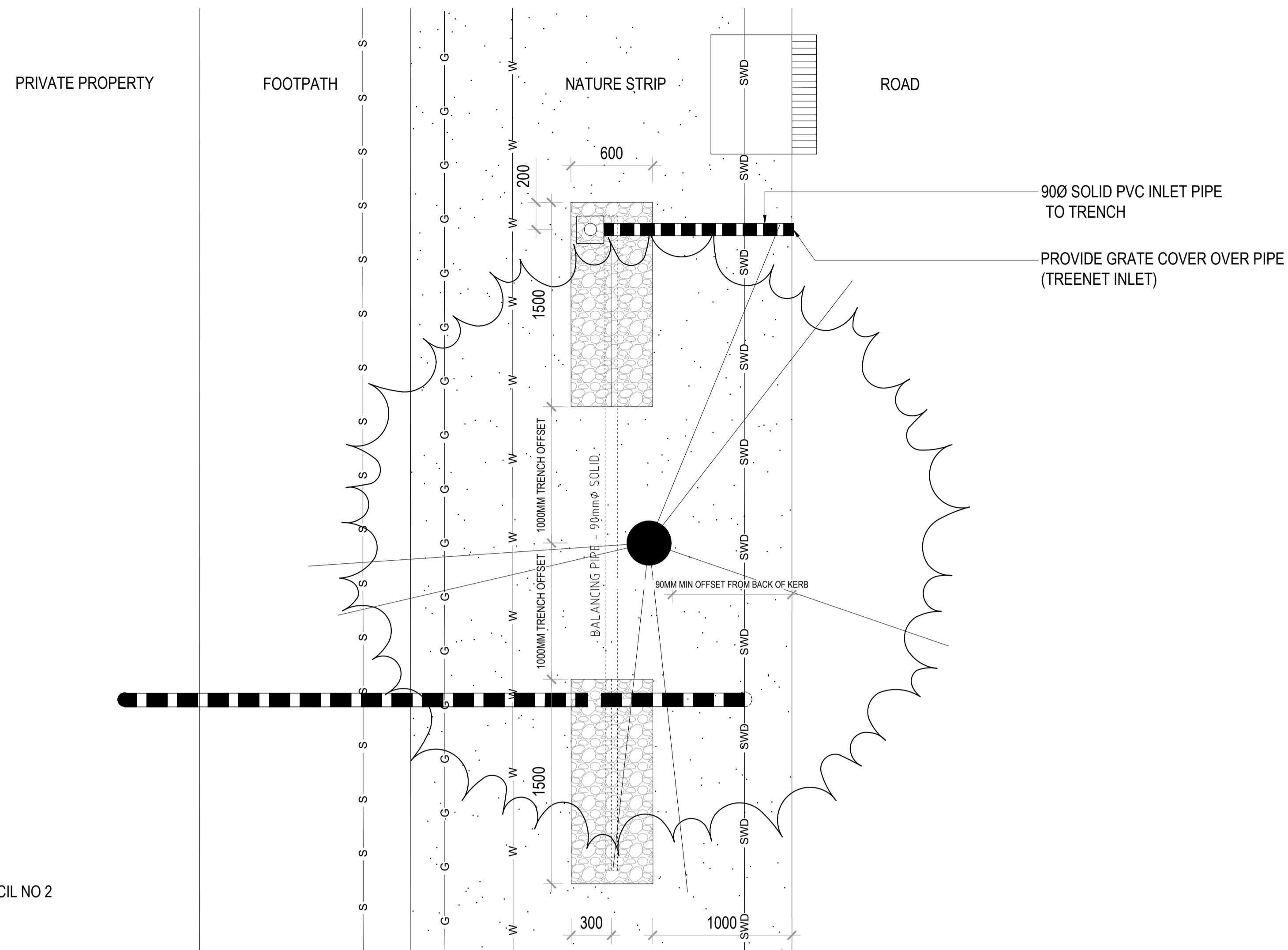
CLIENT: GOLDFIELDS BUILDING 5, 658 CHURCH ST RICHMOND VIC 3121	CLIENT: GOLDFIELDS BUILDING 5, 658 CHURCH ST RICHMOND VIC 3121
--	--



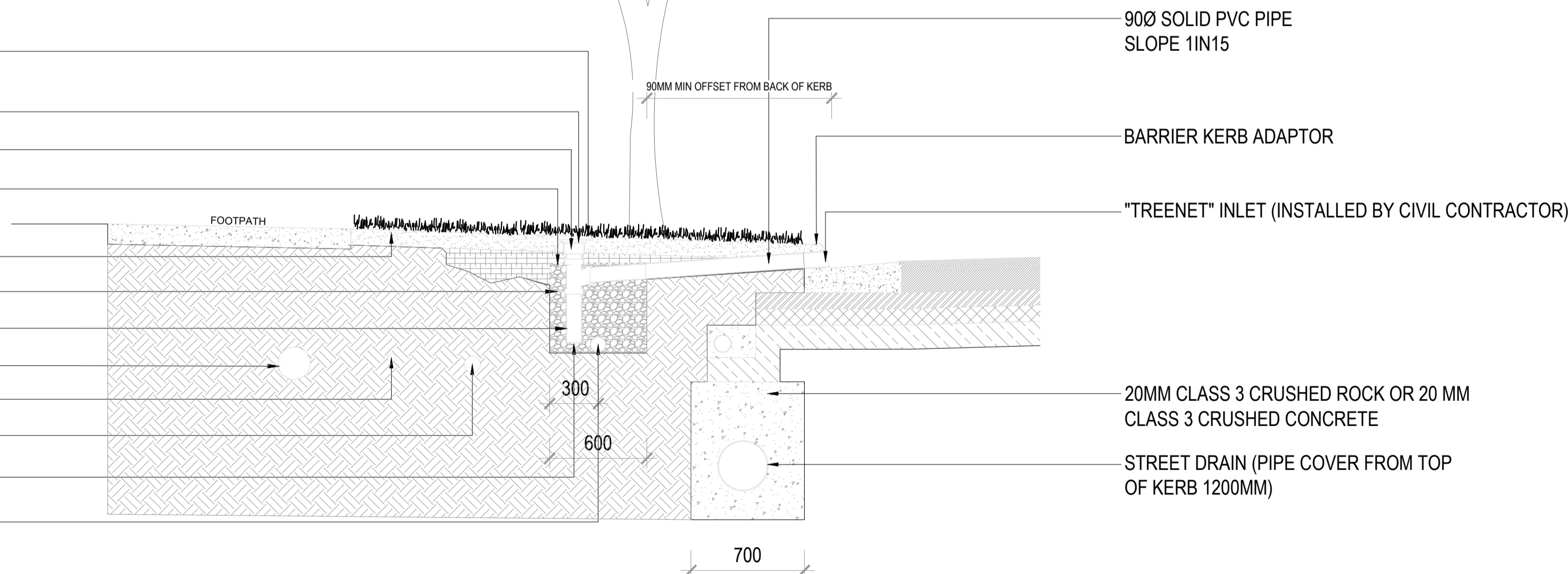
FLOW DESIGN STUDIO
 112 CHESTNUT STREET
 CREMORNE VIC 3121
 AUSTRALIA
 P: (03) 9425 9395
 www.flowdesignstudio.com.au



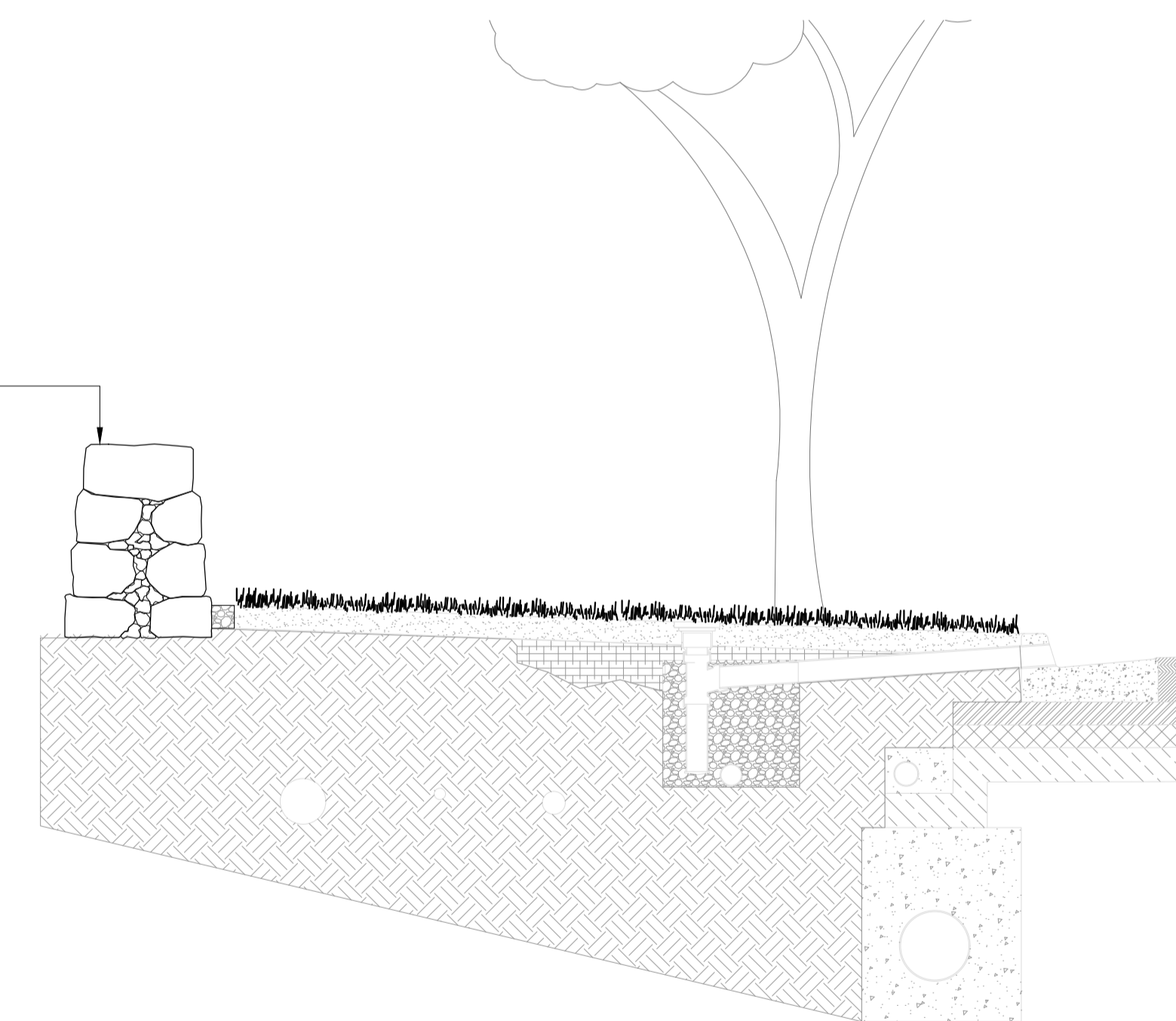
A PLAN TREE PASSIVE IRRIGATION DETAILS / MELTON COUNCIL NO 2
004 1:25@A1



- 200MM BY 200MM PAVER FLUSHED WITH GROUND SURFACE FINISHED SURFACE
- TOP ACCESS CAP BELOW PAVER
- 90MMØ SOLID PVC PIPE WITH THREADED ACCESS CAP
- NON-WOVEN GEOTEXTILE MATERIAL (BIDIM A29 OR EQUIVALENT)
- 100MM TOP SOIL
- GRAVEL TRENCH (RAIL BALLAST NOMINAL SIZE 50MM)
- 90MMØ SLOTTED PIPE WITH GRATED CAP
- SEWER
- GAS
- POTABLE WATER
- 90MMØ BALANCING PIPE BETWEEN GRAVEL AND TRENCHES
- GRATED CAP



INDICATIVE DRYSTONE WALL.



C INDICATIVE ARRANGEMENT OF DRYSTONE WALL AND PASSIVE IRRIGATION
004 1:25@A1 FUSHSIA DRIVE

B SECTION TREE PASSIVE IRRIGATION DETAILS / MELTON COUNCIL NO 2
004 1:25@A1

APPROVED:

DATE:

DRAWING NOTES:

ISSUE	DATE	DESCRIPTION	INITIALS
A	19.11.20	FOR ELEC COORDINATION	NL
B	15.01.21	FOR APPROVAL	NL
C	08.02.21	FOR APPROVAL	NL
D	15.03.21	A/MENTS COUNCIL COMMENTS	NL

PROJECT:

BRIDGEFIELD-STAGE 11

DRAWING NO.:

SST04

SCALE:

AS SHOWN

DRAWING TITLE:

LANDSCAPE DETAILS 02

ISSUE:

D

DRAWN BY:

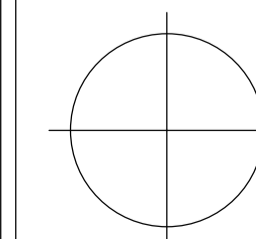
NL

CHECKED BY:

MS

CLIENT:

GOLDFIELDS
BUILDING 5, 658 CHURCH ST
RICHMOND VIC 3121



NORTH

FLOW DESIGN STUDIO
112 CHESTNUT STREET
CREMORNE VIC 3121
AUSTRALIA

P: (03) 9425 9395

www.flowdesignstudio.com.au

